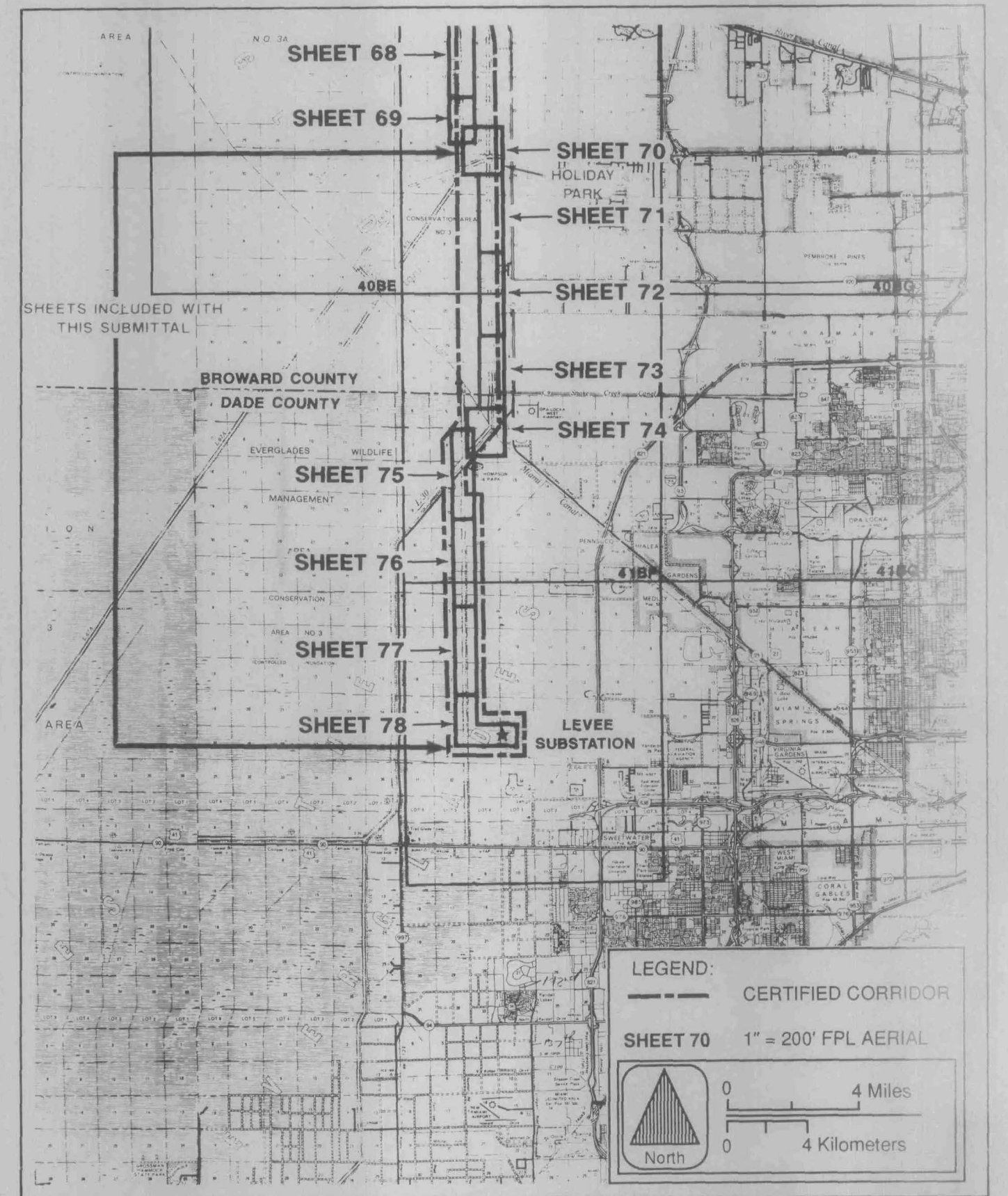


175052

①



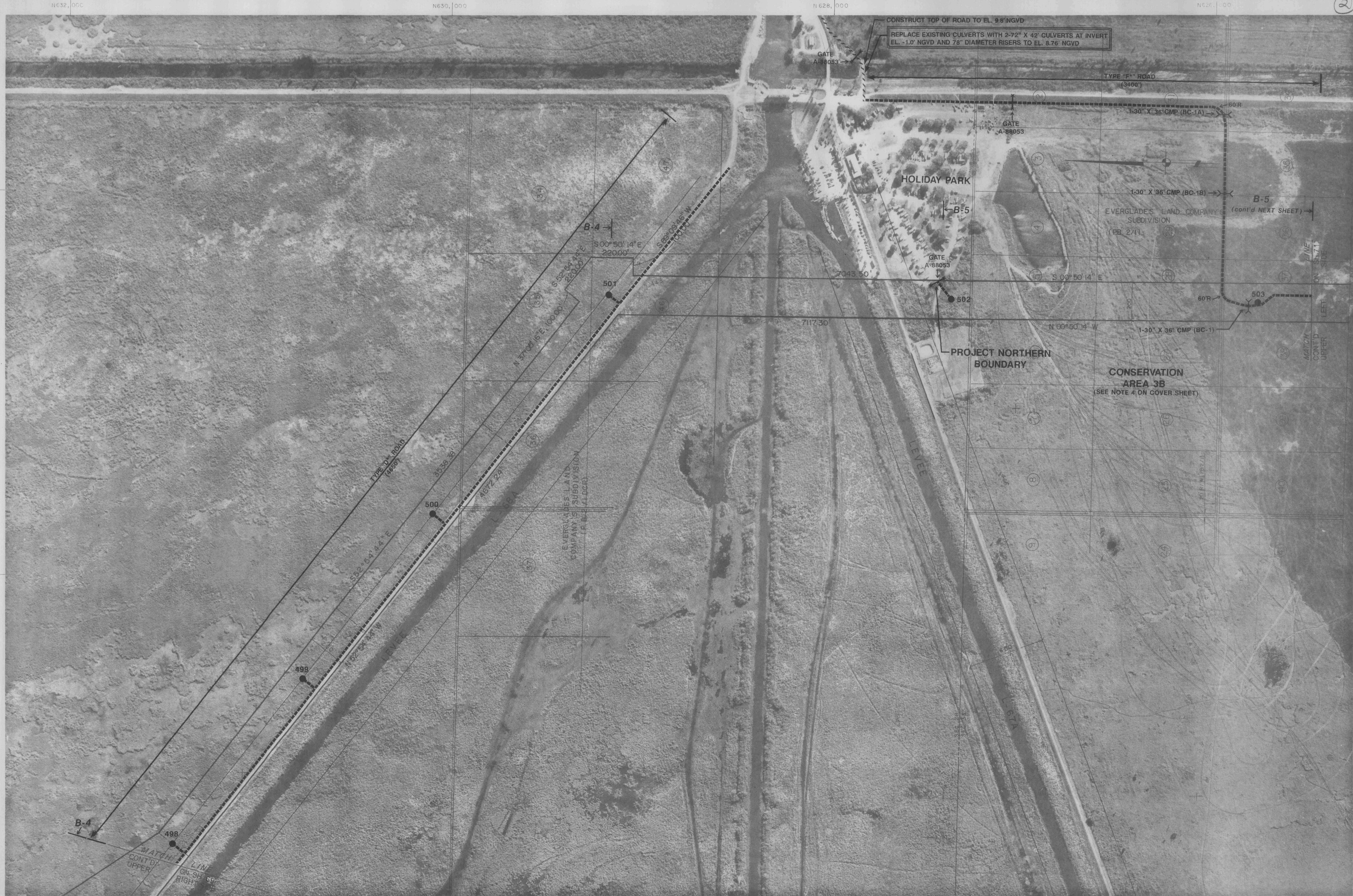
LEVEE - MIDWAY
500kV TRANSMISSION LINE
1"=200' AERIALS
**SOUTHERN BROWARD/
DADE COUNTY**




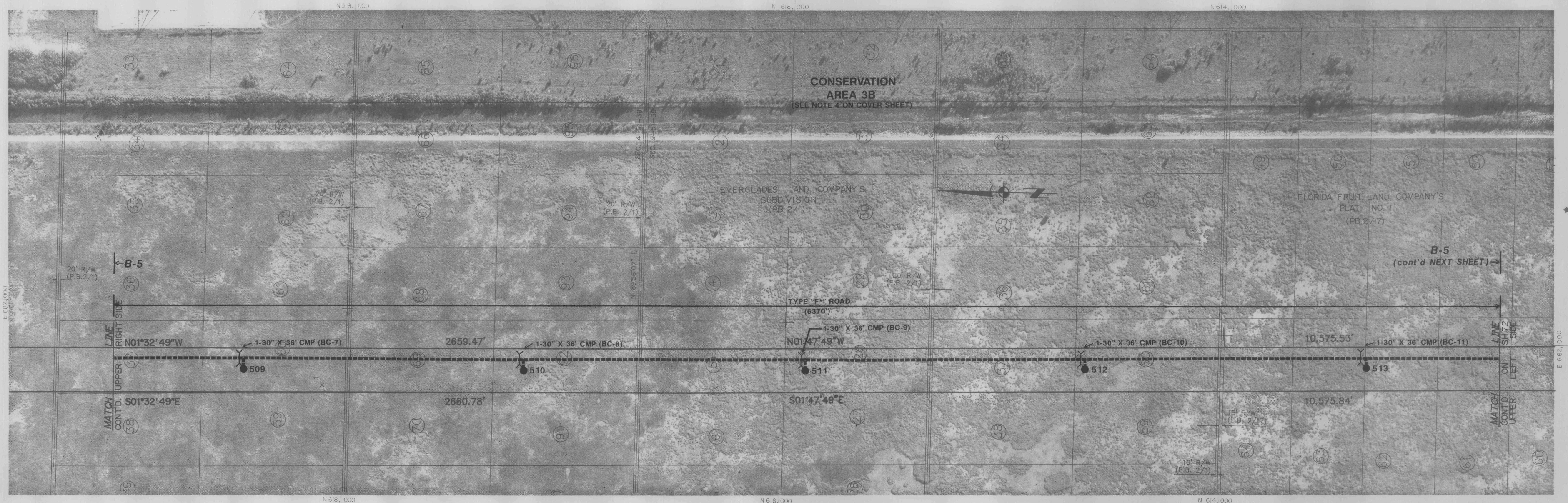
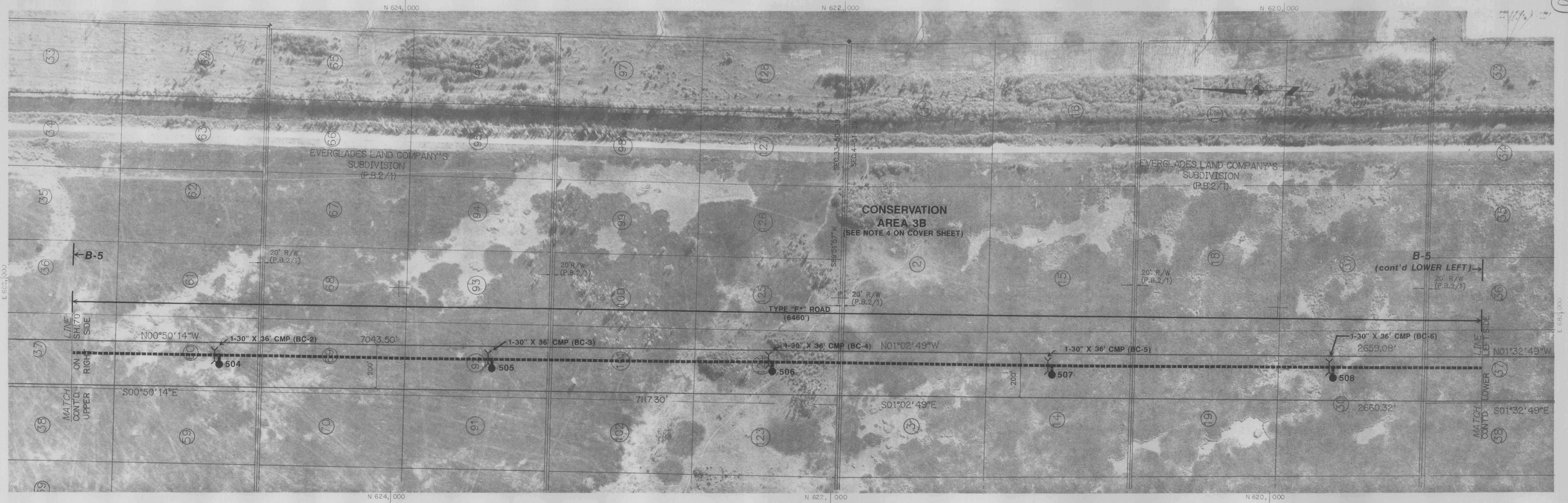
DATE	INDEX OF REVISIONS	LEGEND:
7/9/92	SHEETS 70-78	<ul style="list-style-type: none">● STRUCTURE PAD--- PROPOSED ACCESS ROAD--- FPL EASEMENT REQUIRED OUTSIDE ROW UNLESS OTHERWISE NOTED USE EXISTING ROADS FOR ACCESS--- PROPOSED CULVERTD-1 WETLAND
		<p>NOTES:</p> <ol style="list-style-type: none">1. GEOTEXTILE FABRIC PLACED AT GRADE.2. UNLESS OTHERWISE NOTED ALL PADS ARE TYPE "D".3. CULVERT LENGTHS ARE APPROXIMATE AND REQUIRE FIELD VERIFICATION BEFORE INSTALLATION.4. CONSTRUCT ROAD AND FINGER PAD IN CONSERVATION AREA 3B TO ELEVATION 10.5 NGVD.5. ALL SURVEY AND RIGHT-OF-WAY INFORMATION IS SUBJECT TO CHANGE.

REVISED
JUL 13 1992

Levee-Midway 500 KV line
S. Broward & Dade Co. portion
P&ST cert.

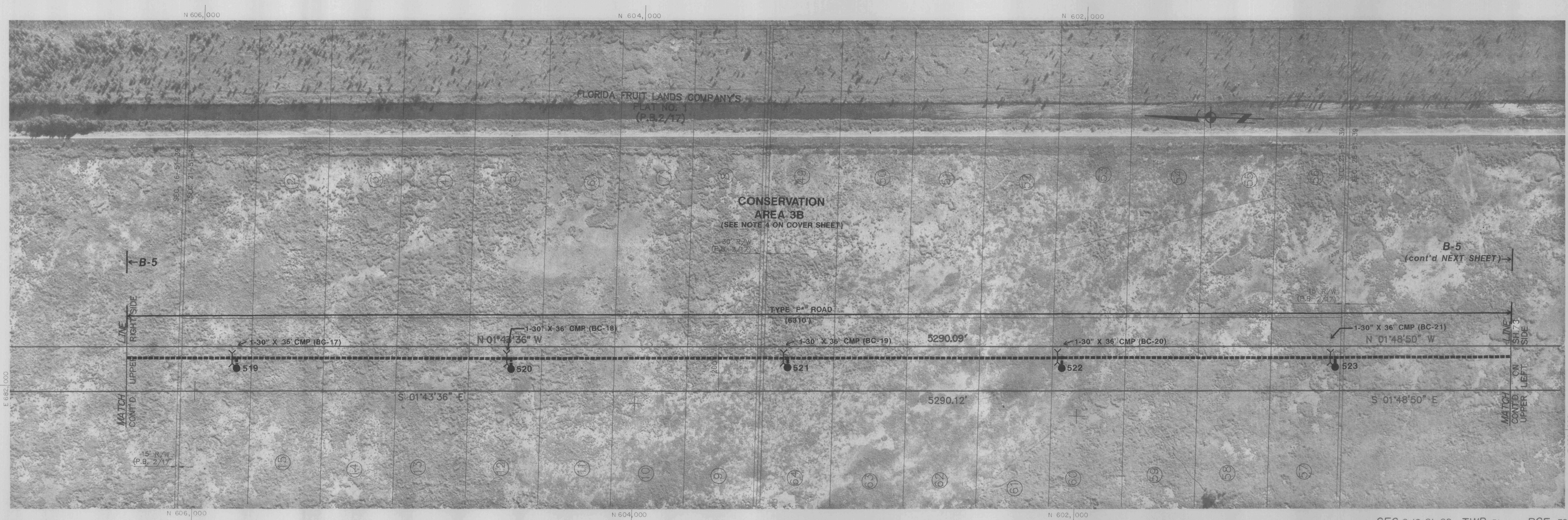
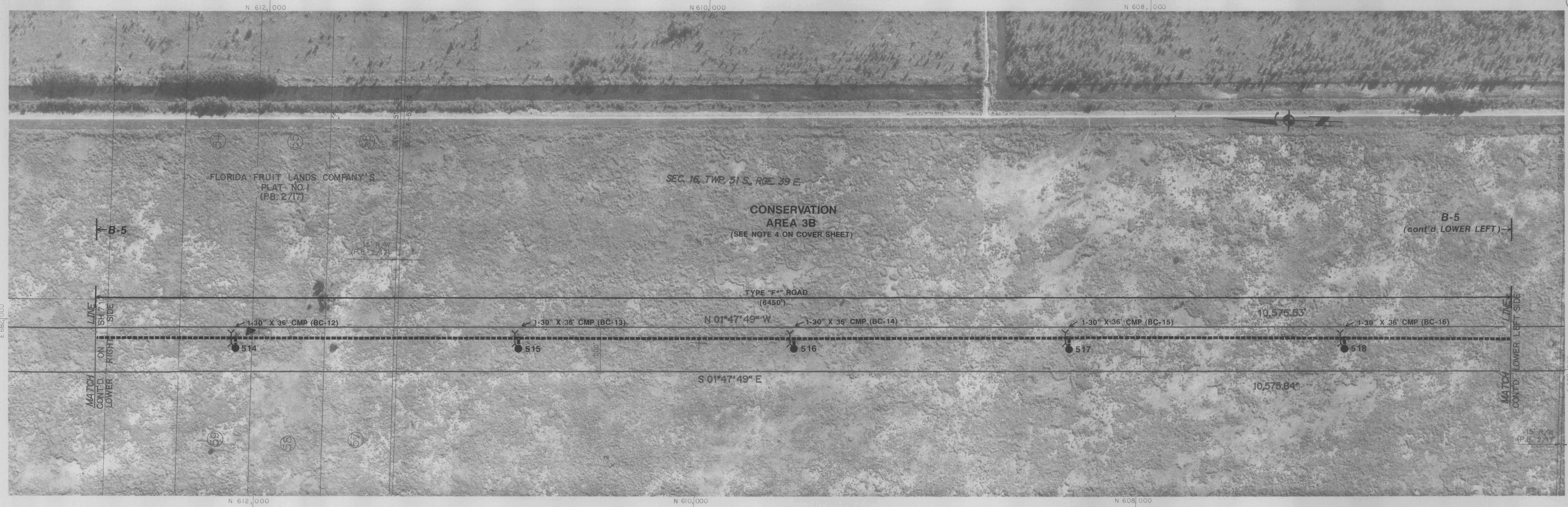


N 632, 000										N 637, 000										N 628, 000										N 626, 000										N 626, 000																																							
																														SEC. 28, 33										TWP. 50										RGE. 3																													
7/9/92 CHANGED CULVERT SIZES										MN										DATE 1-4-91										SCALE 0 200 300 400 600										TRANSMISSION OVERHEAD ROUTE OF LINE BROWARD COUNTY, FLORIDA																																							
7/9/92 ADDED GATES AND REVISED ACCESS TO STRUCTURE 503										MN																				DR A-H																				ER																													
6/4/92 REVISED ACCESS ROADS AND ADDED ROAD DIMENSIONS										MN																				CH																				COR																													
3/16/92 ADDED ACCESS ROAD AND CULVERT LOCATIONS										MN																				APPROVED																																																	
3/9/92 ADDED STRUCTURE LOCATIONS										MN																																																																					
9/18/91 REVISED ALIGNMENT										MN																																																																					
7/17/91 REVISED ALIGNMENT										MN																																																																					
NO DATE										REVISION										BY CH COR APP ER NO DATE										REVISION										BY CH COR APP																																							



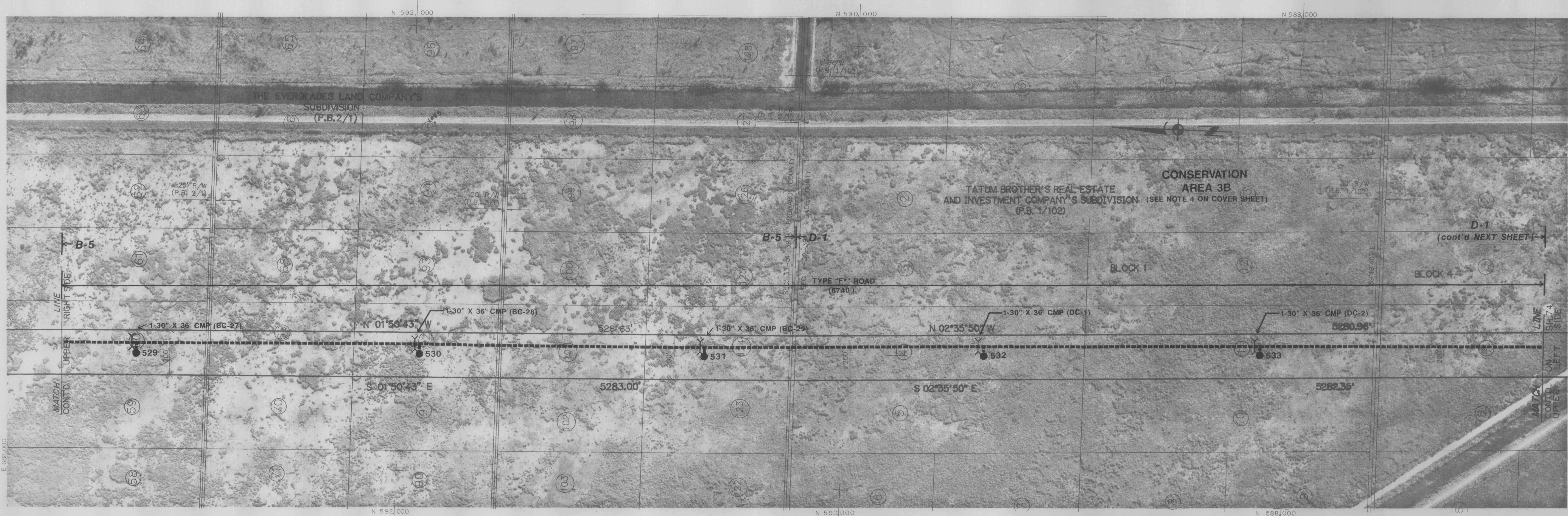
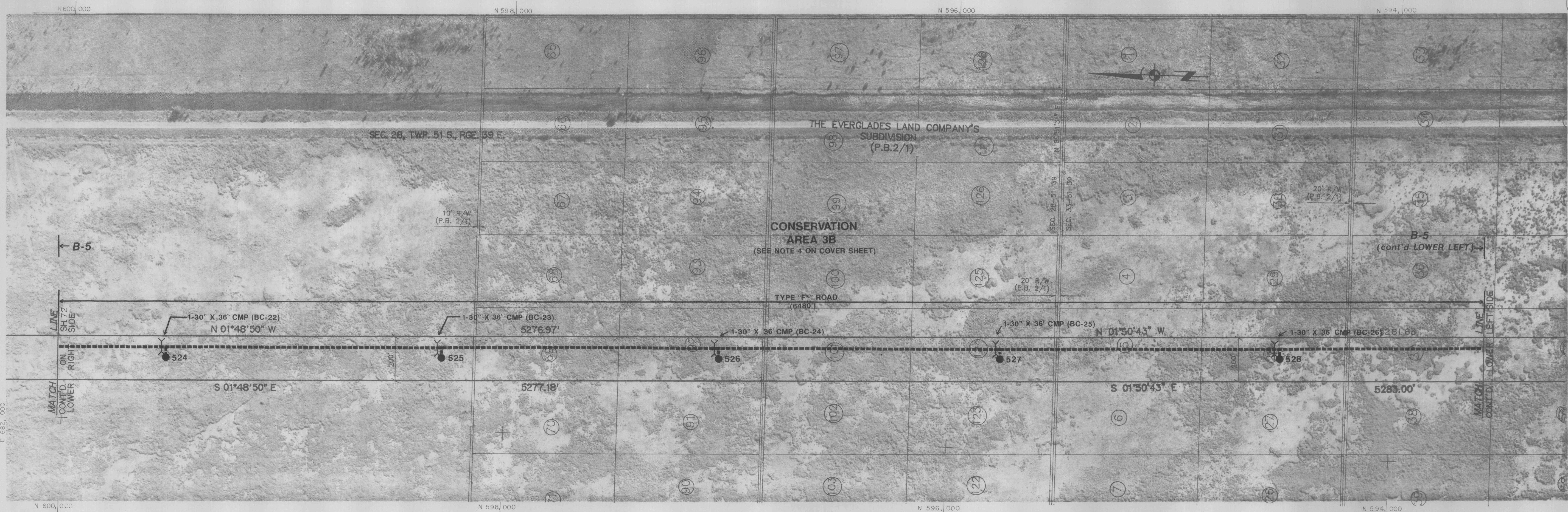
<div> <div>7/9/92</div> <div>3/16/92</div> <div>3/9/92</div> <div>9/18/91</div> </div>				<div> <div>REVISION</div> <div>REVISION</div> </div>				<div> <div>BY</div> <div>CH</div> <div>COR</div> <div>APP</div> </div>				<div> <div>DATE</div> <div>DATE</div> </div>				<div> <div>DATE 8-15-91</div> <div>SCALE 0 200 300 400 500</div> </div>				<div> <div>DR A-H</div> <div>CH</div> <div>APPROVED</div> </div>				<div> <div>TRANSMISSION OVERHEAD</div> <div>ROUTE OF LINE</div> <div>BROWARD COUNTY, FLORIDA</div> </div>				<div> <div>SHEET 71 OF</div> <div>E -113077</div> </div>				<div> <div>REV NO</div> </div>			
--	--	--	--	--	--	--	--	--	--	--	--	--	--	--	--	---	--	--	--	--	--	--	--	---	--	--	--	--	--	--	--	--------------------------------	--	--	--

RECORDED
INDEXED
JUL 13 1992



DATE 8-15-91
SCALE 0 200 300 400 600
FPL
TRANSMISSION OVERHEAD
ROUTE OF LINE
BROWARD COUNTY, FLORIDA
SHEET 72 OF
E-113077
REV NO

7/9/92 3/16/92 9-19-91	REVISED ACCESS ROAD LOCATION AND CULVERT SIZES ADDED ACCESS ROAD AND CULVERT LOCATIONS ADDED SH 10	MN MN MN	BY	CH	COR	APP	ER	NO	DATE	REVISION	BY	CH	COR	APP	DATE	REVISION
ER NO	DATE	REVISION	BY	CH	COR	APP	ER	NO	DATE	REVISION	BY	CH	COR	APP	DATE	REVISION



<div> <div>7/9/92</div> <div>3/23/92</div> <div>3/16/92</div> <div>3/9/92</div> <div>3/3/92</div> <div>9/19/91</div> </div>				<div> <div>REVISION</div> <div>BY</div> <div>CH</div> <div>COR</div> <div>APP</div> <div>ER</div> <div>NO</div> <div>DATE</div> </div>				<div> <div>REVISION</div> <div>BY</div> <div>CH</div> <div>COR</div> <div>APP</div> <div>ER</div> <div>NO</div> <div>DATE</div> </div>				<div> <div>DATE 8-15-91</div> <div>SCALE 0 200 300 400 600</div> <div> <div>DR A-H</div> <div>ER</div> <div>CH</div> <div>COR</div> <div>APPROVED</div> </div> </div>				<div> <div>TRANSMISSION OVERHEAD</div> <div>ROUTE OF LINE</div> <div>BROWARD COUNTY /</div> <div>DADE COUNTY, FLORIDA</div> </div>				<div> <div>SEC. 28, 33, 4</div> <div>TWP. 51, 52</div> <div>RGE. 39</div> </div>				<div> <div>SHEET 73 OF</div> <div>REV NO</div> </div>			
<div> <div>ER</div> <div>NO</div> <div>DATE</div> </div>				<div> <div>BY</div> <div>CH</div> <div>COR</div> <div>APP</div> <div>ER</div> <div>NO</div> <div>DATE</div> </div>				<div> <div>REVISION</div> <div>BY</div> <div>CH</div> <div>COR</div> <div>APP</div> <div>ER</div> <div>NO</div> <div>DATE</div> </div>				<div> <div>DATE 8-15-91</div> <div>SCALE 0 200 300 400 600</div> <div> <div>DR A-H</div> <div>ER</div> <div>CH</div> <div>COR</div> <div>APPROVED</div> </div> </div>				<div> <div>TRANSMISSION OVERHEAD</div> <div>ROUTE OF LINE</div> <div>BROWARD COUNTY /</div> <div>DADE COUNTY, FLORIDA</div> </div>				<div> <div>SEC. 28, 33, 4</div> <div>TWP. 51, 52</div> <div>RGE. 39</div> </div>				<div> <div>SHEET 73 OF</div> <div>REV NO</div> </div>			

RECEIVED
JUL 13 1992



7/9/92 7/11/92 7/11/92 9/11/92 10/11/92 9/10/91				ADDED GATES CHANGED DC 5 AND CHANGED SIZE OF DC 4 CHANGED ACCESS ROAD TO STRUCTURE 535 CHANGED ACCESS ROAD TO STRUCTURES 536-541 ADDED ACCESS ROAD AND CULVERT LOCATIONS ADDED STRUCTURE LOCATIONS FOR DADE COUNTY REVISED ALIGNMENT				MN MN MN MN MN MN				ER NO DATE REVISION BY CH COR APP				ER NO DATE REVISION BY CH COR APP				DATE 8-15-91 SCALE 0 200 300 400 500				DR A-H ER CH COR APPROVED				FPL				TRANSMISSION OVERHEAD ROUTE OF LINE DADE COUNTY, FLORIDA				SEC. 4, 9 TWP. 52 RGE. 39				SHEET 74 OF E - 113077				REV NO			
--	--	--	--	--	--	--	--	----------------------------------	--	--	--	-----------------------------------	--	--	--	-----------------------------------	--	--	--	--------------------------------------	--	--	--	---------------------------------	--	--	--	-----	--	--	--	--	--	--	--	---------------------------	--	--	--	---------------------------	--	--	--	--------	--	--	--

